

TEAM MEETING GUIDE

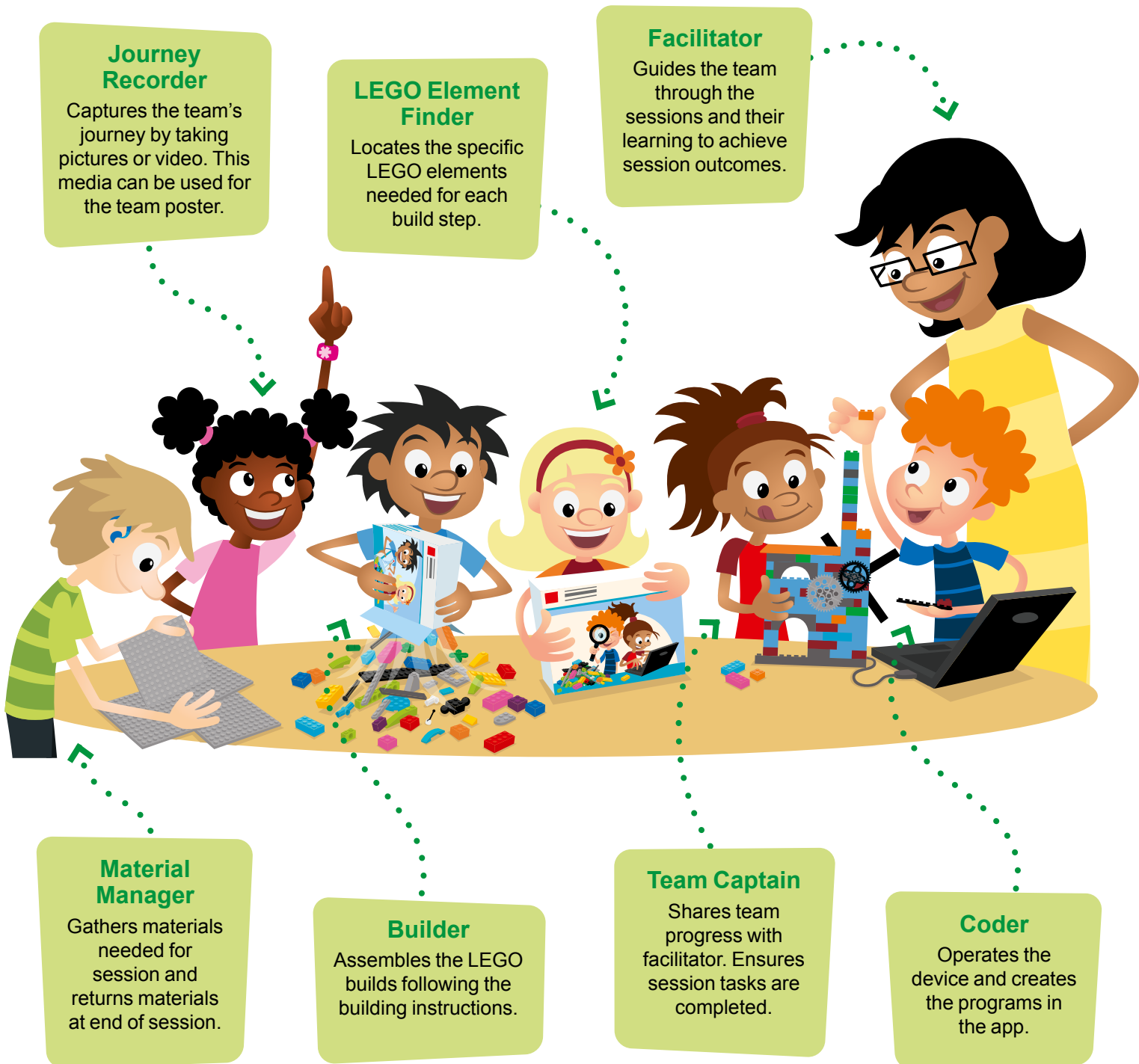


Team Roles

Here are sample team roles to use during the sessions. Everyone on the team could experience each role multiple times throughout their *FIRST*® LEGO® League Explore

experience. Using roles helps the team function more efficiently and ensures that everyone on the team is engaged. Some roles will be filled by multiple children during a

session. For example, the builder and coder roles can be duplicated where the experience is designed for a pair of children.



Playful Learning in Action

FIRST® Core Values

The FIRST® Core Values are the cornerstones of the program. They are among the fundamental elements of FIRST LEGO® League. By embracing the Core

Values, children use discovery and exploration of the theme in each session and learn that helping one another is the foundation of teamwork. It is important that

the children have fun. The more playful the sessions are, the more motivated the children will be.



We found we were stronger when we worked together.



We respected each other and embraced our differences.



We used creativity and persistence to solve problems.



We enjoyed and celebrated what we did!



We explored new skills and ideas.



We applied what we learned to improve our world.



Session 1

Outcomes

- The team will build the truck and create new truck designs.
- The team will use discovery to explore the CARGO CONNECTSM theme and how cargo is transported to different destinations.

Introduction (10 minutes)

Let's Discover

- Read the definition for **discovery** to the team. (see page 5)
- Talk about what **discovery** is. Have the team provide examples of this Core Value.
- Extension: Have everyone draw a picture of an example of **discovery** on the Core Values page in their *Engineering Notebook*.

Guiding Questions

- How can you load cargo and transport it to different areas?
- How do packages get delivered to your front door?

Session Tips

- 1 The team will need Book 1 and Bag 1 located in the Explore set.
- 2 Most of the tasks in each session should be done together by the team.
- 3 Writing and drawing space is provided in each session for each child to capture their thoughts and ideas.

2 Tasks (20 minutes)

- Talk about Ruby and Jacob's questions.
- Use the space below to capture your inventive ideas!
- Follow the building instructions in Book 1 to make the truck.
- Look at the mat and discover how the truck works!

Session 1

Your team needs: 1



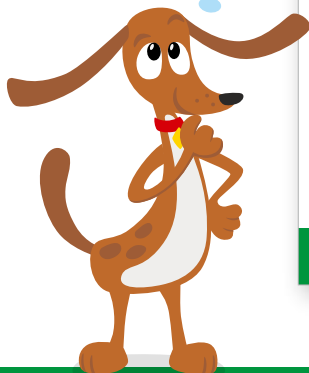
How is cargo packed and loaded onto vehicles?



What products need to be transported to and from your community?



3



Let's Explore

Share (10 minutes)

Have the team:

- Share what they did in the session.
- Explain how cargo is transported to and from their community.
- Describe their truck designs.
- Demonstrate how their solutions work on the mat.

Let's Explore

Your team needs:



4



5



Tasks (20 minutes)

- Circle the routes the truck can take on the mat image.
- Draw your design of a truck that transports cargo.
- Label what products are in the cargo the truck transports.
- Share your creation with your team!
- Work as a team to build your amazing truck designs using the LEGO® prototyping pieces (Bag 4).
- Place your built trucks on the mat and show how they work.

What have you discovered? Share with your team!



6

DESIGNS

Draw your designs!

Guiding Questions

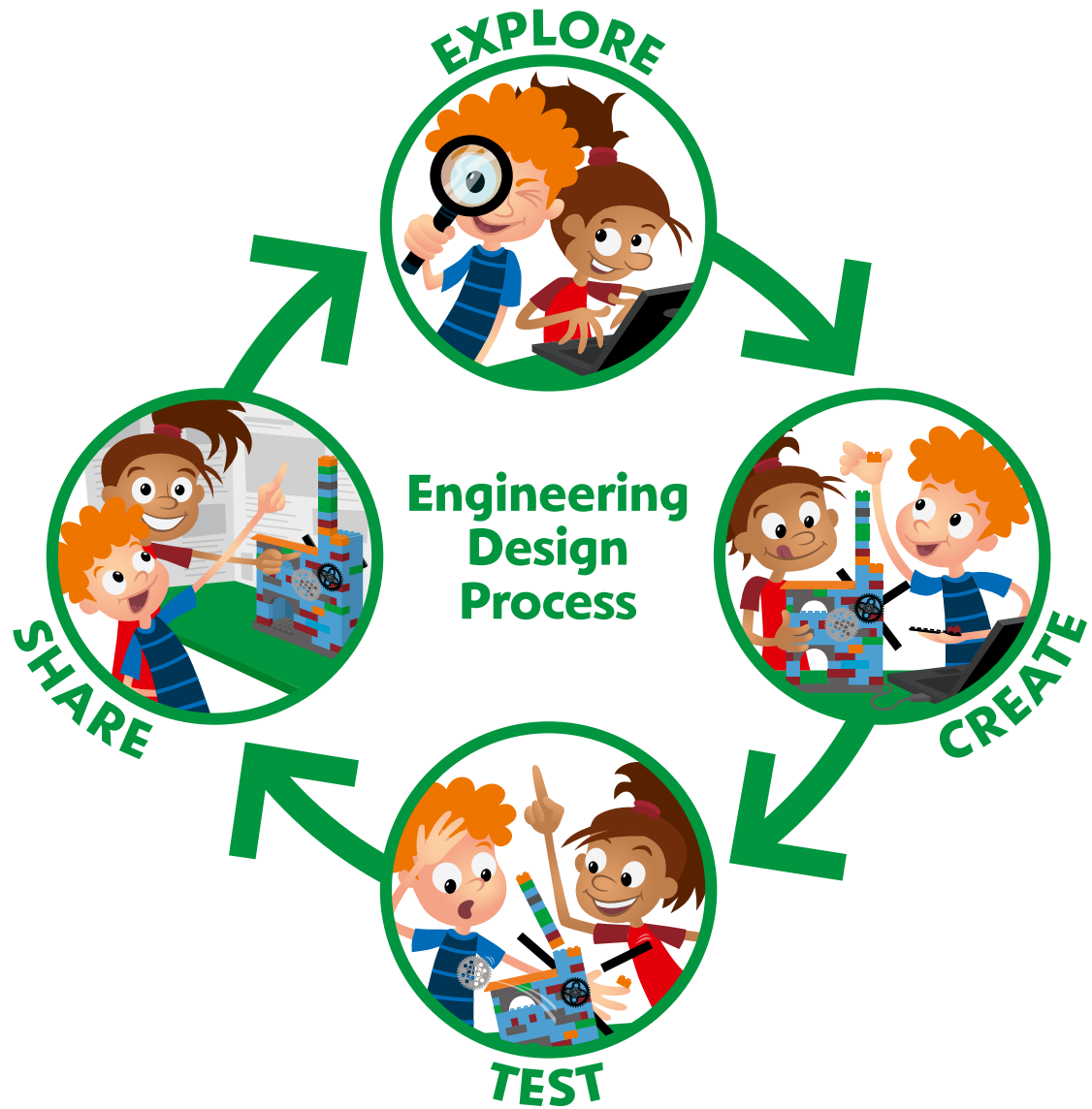
- What routes do cargo trucks use for transportation?
- Where do you see trucks doing deliveries in your town?

Session Tips

- 4 Give the team the LEGO® prototyping pieces (Bag 4) to create their designs. Do NOT open Bags 2 or 3.
- 5 Place the mat on top of a table or the floor for the team to interact with the mat.
- 6 Max the dog will give session reflection questions for the team.

Cleanup Pointers

- The truck should stay assembled, but everything else should be taken apart.
- Place the prototyping pieces back in the Explore box or in a container labeled "Prototyping Pieces."



LEGO and the LEGO logo are trademarks of the/sont des marques de commerce du/son marcas registradas de LEGO Group. ©2021 The LEGO Group. All rights reserved/Tous droits réservés/Todos los derechos reservados. *FIRST*[®], the *FIRST*[®] logo, and *FIRST*[®] FORWARDSM are trademarks of For Inspiration and Recognition of Science and Technology (*FIRST*). LEGO[®] is a registered trademark of the LEGO Group. *FIRST*[®] LEGO[®] League and CARGO CONNECTSM are jointly held trademarks of *FIRST* and the LEGO Group. ©2021 *FIRST* and the LEGO Group. All rights reserved. 20082101 V1