

Eye Spy

Are you planning a trip over the holidays? Play our fun Eye Spy game to pass the time and see what you can spot on your journey.

We've also included some fun facts and questions to get you thinking about all the interesting things around you! (Answers are available to download on the website: theiet.org/santa).

Wind turbine



Motorway sign



Bridge



Lorry



River



Drill farming equipment (Used to sow seed in the fields)



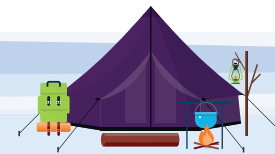
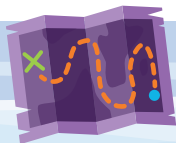
Traffic lights



Solar farm



Road works



Eye Spy picture facts

Here are some fun facts and questions to get you thinking about all the interesting things you've spotted around you!
(Answers are available to download on the website: theiet.org/santa).

Wind turbine

Fun fact: large groups of turbines are called 'wind farms' and they are often built in the sea.

What does a wind turbine make?

Motorway sign

Fun fact: the widest motorway in Britain has 17 lanes!

Highway engineers improve roads. What could you make better on the roads around you to help stop traffic jams?

Bridge

Fun fact: a civil engineer designs bridges, sometimes using steel or other materials that can be recycled and reused.

Why do you think metal is a good material for a bridge?

Lorry

Fun fact: around 7% of global carbon emissions are generated by heavy transportation trucks.

What could we do in our homes and at school to help reduce how much cargo is moved around?

River

Fun fact: a river is a freshwater habitat, and freshwater habitats are home to more than 100,000 species of plants and animals!

Where does river water come from and go to? Why?

Drill farming equipment

Fun fact: wheat and bean seeds are usually sown in the ground in winter.

What happens to a seed underground? What does it need to grow? What is the lifecycle of a plant?

Traffic lights

Fun fact: the first traffic lights were lit by gas light.

How could we power traffic lights in a more eco-friendly way?

Solar farm

Fun fact: solar panels can create energy from daylight even on cloudy days.

How can we store this energy to use it at night-time for festive lights?

Road works

Fun fact: having to dig up holes in the road is usually due to gas, electricity or water works. If the cables or pipes break, a team of engineers solve the problem together.

Are you good at working in a team? See if your family can come up with ways you could use less electricity in your home this Christmas.

