

Working drawings

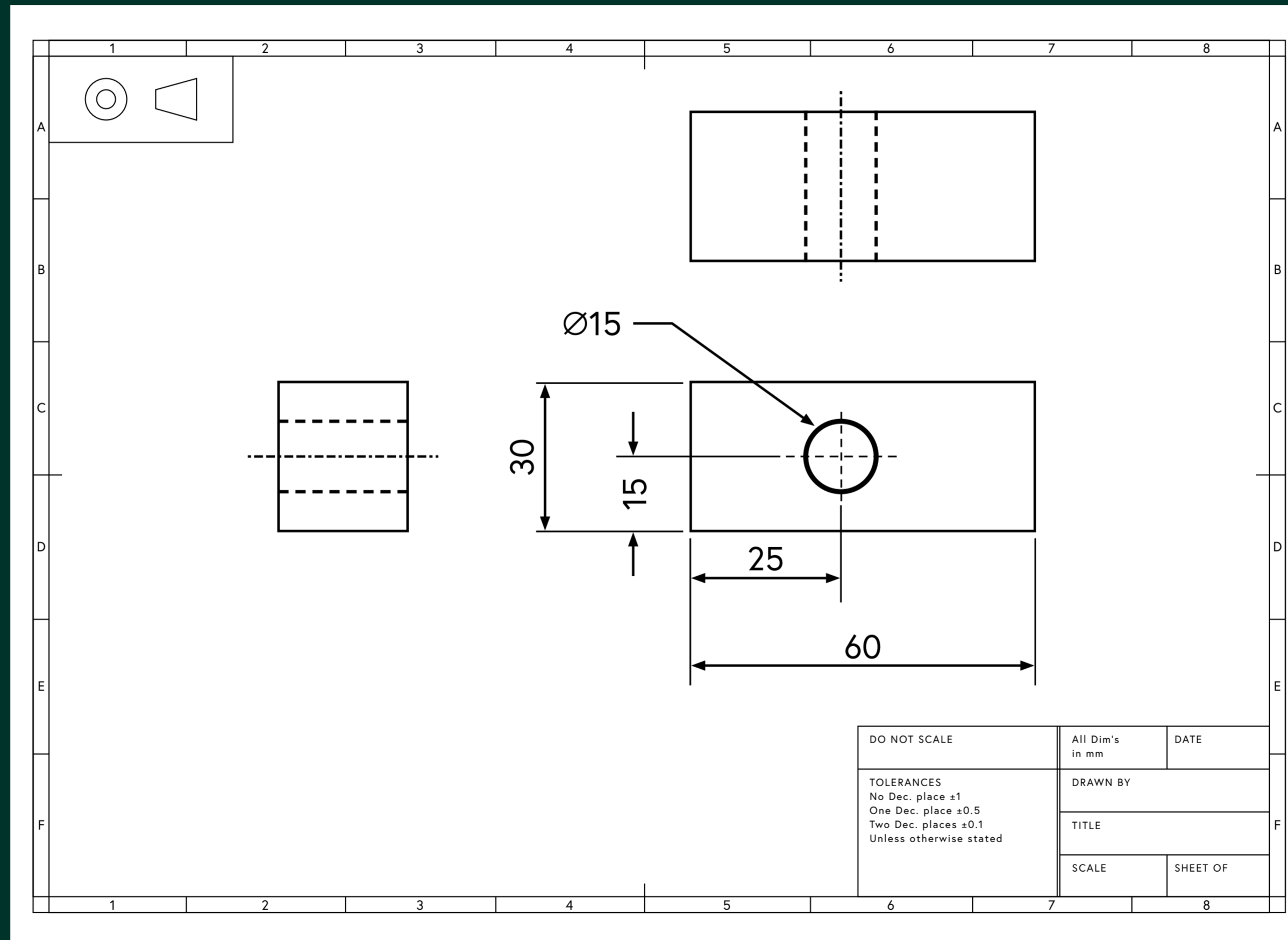
– Working drawings are also known as **engineering drawings, orthographic drawings and orthographic projections.**

– They are used to communicate the **sizes of parts.**

– They show three views – the **side, front and top.**

– They normally have a **border and a title block** with information such as the **scale and tolerance.**

– They should use the conventions given in **British Standard BS EN 8888:2011**



Dimensions

- **Leader lines** (also known as projection lines) extend from the part to the dimension line. There should be a small space between the part and the leader line.
- Dimensions should be shown **mid-way along the dimension line, above horizontal lines or to the left of vertical lines.**
- **Dimension lines** should have **solid arrow heads.**
- Dimensions are normally in **millimetres.**

Types of line

Working drawings use different types of line to show different things. Some common lines types are:

- Geometry line** – visible outline or edge.
- Hidden detail** – features not visible on the surface.
- Centre lines** – showing the centre of a round feature.